

RADIOLOGY AND BIOMEDICAL IMAGING: NEW APPROACHES TO UNDERSTANDING OUR HEALTH THROUGH IMAGING TECHNOLOGIES



Tuesday evenings,
October 13 - November 17
7:00 to 8:30 pm
UCSF's Parnassus Campus
513 Parnassus Avenue
(School of Nursing Building, Room 225)

Meet the leaders behind the newest imaging tools to diagnose, treat and prevent disease!

X-RAY, Ultrasound, CT, MRI, PET. We hear these terms, but how are they being used in the diagnosis, treatment and prediction of disease? In this fascinating course delivered by UCSF's Department of Radiology and Biomedical Imaging, world leaders in imaging and treatment will explain how exams like virtual colonoscopy, lung cancer screening and bone density analysis are catching disease early enough to save lives, while new techniques are increasing patient safety, comfort, convenience and peace-of-mind.

COURSE CHAIR:

Brett Elicker, MD – Associate Professor of Radiology; Chief, Cardiac and Pulmonary Imaging, Department of Radiology and Biomedical Imaging, UCSF

October 13

HOW VIVID IMAGES ARE REDUCING LUNG CANCER DEATHS

Brett Elicker, MD
Associate Professor of Radiology;
Chief, Cardiac and Pulmonary Imaging,
Department of Radiology and Biomedical
Imaging, UCSF

October 20

SPORTS MEDICINE IMAGING, MUSCULOSKELETAL ULTRASOUND AND ULTRASOUND-GUIDED PROCEDURES

Daria Motamedi, MD
Assistant Professor, Department of
Radiology and Biomedical Imaging, UCSF

Tara Morgan, MD
Assistant Professor, Department of
Radiology and Biomedical Imaging, UCSF

October 27

IMAGING GENTLY: OVERCOMING CHILDREN'S FEARS IN RADIOLOGY

Jesse Courtier, MD
Assistant Professor, Department of
Radiology and Biomedical Imaging, UCSF

Jonathan Iris-Wilbanks, MA, CCLS
Child Life Specialist, UCSF Benioff
Children's Hospital

November 3

ADVANCES IN THE TREATMENT & DIAGNOSIS OF ACUTE STROKE: WHAT YOU NEED TO KNOW

Randall Higashida, MD
Professor, Departments of Radiology,
Neurological Surgery, Neurology, and
Anesthesiology, UCSF

Nerissa Ko, MD, MAS
Professor, Department of Neurology, UCSF

November 10

VIRTUAL COLONOSCOPY: A KINDER, GENTLER WAY TO PREVENT COLON CANCER

Judy Yee, MD, FACR
Professor and Vice Chair, Department of
Radiology and Biomedical Imaging, UCSF;
Chief, Department of Radiology, Veterans
Affairs Medical Center, San Francisco, CA

November 17

INTERNAL STAR WARS: KILLING TUMORS WITH SCANS INSTEAD OF SCALPELS

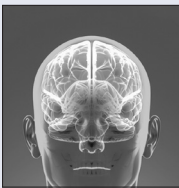
Ronald Zagoria, MD
Professor and Chief of Abdominal Imaging
UCSF

Matthew Bucknor, MD
Assistant Professor, Department of
Radiology and Biomedical Imaging, UCSF

Maureen Kohi, MD
Assistant Professor, Department of
Radiology and Biomedical Imaging, UCSF

Jeannette Lager, MD, MPH
Assistant Professor, Department of Obstetrics,
Gynecology & Reproductive Sciences, UCSF

YOUR BRAIN IN HEALTH AND DISEASE



Wednesday evenings,
October 14 - December 2
(No sessions on November 11 & 25)
7:00 to 8:30 pm
UCSF's Mission Bay Campus, Genentech Hall
600 16th Street (Byers Auditorium)

The brain is the most important organ in the body. With our aging population the incidence of brain disorders such as Alzheimer's disease are predicted to reach epidemic proportions. Prevention, recognition, treatment and even potential cures are presented by one of the world's leading centers in the care and research of neurodegenerative disorders.

COURSE CHAIR:

Michael D. Geschwind, MD, PhD – Professor of Neurology;
Michael J. Homer Chair in Neurology, Memory and Aging Center,
Department of Neurology, UCSF

TOPICS

- NORMAL AND ABNORMAL AGING AND THE BRAIN
- ALZHEIMER'S DISEASE, FRONTOTEMPORAL DEMENTIA AND PARKINSON'S DISEASE
- RAPIDLY PROGRESSIVE DEMENTIA: FROM PRIONS TO ANTIBODIES
- SLEEP DISORDERS
- CHRONIC TRAUMATIC ENCEPHALOPATHY
- LANGUAGE AND BRAIN: FROM DYSLEXIA TO PROGRESSIVE APHASIA

GATEWAY TO THE BODY: THE ORAL CAVITY AND DENTISTRY



Thursday evenings,
October 15 - November 19
7:00 to 8:30 pm
UCSF's Parnassus Campus
513 Parnassus Avenue
(School of Nursing Building, Room 225)

It is a common saying among many health practitioners that the body begins at the tonsils. Yet before reaching that boundary between the primary realm of the dentist and the physician, there are conditions and diseases in the mouth that have a major impact on overall health, comfort, and self-image. The health practitioner and patient may often ask questions such as: Are there new approaches to prevent tooth decay for myself or for my children? Is that red or white spot in my mouth something to be concerned about? Does the health of my gums affect my overall health? How effective are lasers for my dental treatment? What determines the shape of my child's, face, mouth and teeth? And what is the best type of dental implant for me? In this six part series, these current topics in dentistry and dental research will be presented by some of the leading experts in these fields at UCSF. At the conclusion of the course, attendees will gain new insights into this broad field of dentistry.

COURSE CHAIRS:

Peter Rechmann, DMD, PhD – Professor, Division of Prosthodontics;
Director Clinical Sciences Research Group, Department of Preventive
and Restorative Dental Sciences, School of Dentistry, UCSF

Mark Ryder, DMD – Professor and Chair of Periodontology,
Department of Orofacial Sciences, School of Dentistry, UCSF

October 15

GUMS TO GUTS: PERIODONTAL MEDICINE

Mark Ryder, DMD
Professor and Chair of Periodontology,
Department of Orofacial Sciences, School of
Dentistry, UCSF

October 22

CAN LASERS FIX TEETH?

Peter Rechmann, DMD, PhD
Professor, Division of Prosthodontics;
Director Clinical Sciences Research Group,
Department of Preventive and Restorative
Dental Sciences, School of Dentistry, UCSF

October 29

DENTAL IMPLANTS: TEETH WITH TITANIUM

Arun Sharma, BDS, MS
Professor, Department of Preventive and
Restorative Dental Sciences, School of
Dentistry, UCSF

November 5

PREVENTION OF TOOTH DECAY IS WORTH EVERYTHING

John Featherstone, PhD
Dean, School of Dentistry; Professor,
Department of Preventive and Restorative
Dental Sciences, School of Dentistry, UCSF

November 12

HOW TO GET A HEAD IN LIFE: THE DEVELOPMENT OF THE CRANIOFACIAL COMPLEX

Richard Schneider, PhD
Associate Professor, Departments of
Orthopaedic Surgery, Biology
and Orofacial Sciences, UCSF

November 19

ORAL MEDICINE OR DERMATOLOGY OF THE MOUTH: ORAL DISEASES BEYOND TEETH

Caroline Shiboski, DDS, MPH, PhD
Professor, Department of Orofacial Sciences,
School of Dentistry, UCSF

REGISTRATION FORM

Name: (Dr • Mr • Ms • Mrs) _____

Street address: _____

City: _____ State: _____ Zip: _____

Phone: _____ Email: _____

Month & day of birth: ____/____

Do you want to be on our priority email list? YES NO

Select course by checking box(es):

Tuesday evenings, October 13 - November 17
MLL16001 **RADIOLOGY AND BIOMEDICAL IMAGING: NEW APPROACHES TO UNDERSTANDING OUR HEALTH THROUGH IMAGING TECHNOLOGIES**

Wednesday evenings, October 14 - December 2 (No sessions on November 11 & 25)
MLL16002 **YOUR BRAIN IN HEALTH AND DISEASE**

Thursday evenings, October 15 - November 19
MLL16003 **GATEWAY TO THE BODY: THE ORAL CAVITY AND DENTISTRY**

To register for a session, please list date/s you will be attending:
Session Date/s: _____

Please charge my Visa MasterCard American Express

No. _____ / _____ / _____ / _____

Exp. Date _____ Authorized Signature _____

COURSE FEES

ONE Course **\$75**
TWO Courses **\$130**
THREE Courses **\$185**
STUDENT **\$30** per series
(Valid Student ID required at check-in)

SESSION FEES

ONE Session **\$15**
STUDENT **\$5**
(Valid Student ID required at check-in)

Amount to be charged \$ _____

FOUR EASY WAYS TO REGISTER:

Online: Register at osherminimedicalschool.ucsf.edu
Online registration available for 6-week course only.
To register for individual weekly sessions, please register by phone, fax or mail.

Phone: Call (415) 476-5808. Please have your Visa, MasterCard or Amex ready.

Fax: Send completed form to (415) 502-1795. Include your credit card number and expiration date.

Mail: Send the registration form and your check payable to "UC Regents" to:

UCSF Osher Mini Medical School
3333 California Street, Suite 450
Box 0742
San Francisco, CA 94143-0742



University of California
San Francisco

advancing health worldwide™

0569
UCSF Osher Mini Medical School for the Public
3333 California Street
Suite 450, Box 0742
San Francisco, CA
94143-0742



University of California
San Francisco

advancing health worldwide™

UCSF Osher Center for Integrative Medicine
Mini Medical School for the Public

DIRECTOR

Robert B. Baron, MD, MS

Director, UCSF Osher Mini Medical School for the Public; Professor of Medicine; Associate Dean, Graduate and Continuing Medical Education

PLANNING COMMITTEE

Margaret A. Chesney, PhD

Director, UCSF Osher Center for Integrative Medicine

Tymothi Peters

Director, Office of Continuing Medical Education, UCSF School of Medicine

Jeffrey A. Tabas, MD

Professor of Emergency Medicine; Director of Outcomes and Innovations, Office of Continuing Medical Education, UCSF School of Medicine

COURSE MANAGER

Jane Brooks, MSc, CMM

Conference Manager, Office of Continuing Medical Education, UCSF School of Medicine

REGISTRATION MANAGER

Natasha Serikova

Registration and Financial Manager, Office of Continuing Medical Education, UCSF School of Medicine



www.osherminimedicalschool.ucsf.edu

FALL 2015
COURSE CATALOG

UCSF Osher Center for Integrative Medicine

Mini Medical School for the Public



Tuesday evenings, October 13 - November 17

**RADIOLOGY AND BIOMEDICAL IMAGING:
NEW APPROACHES TO UNDERSTANDING OUR
HEALTH THROUGH IMAGING TECHNOLOGIES**

Wednesday evenings, October 14 - December 2

YOUR BRAIN IN HEALTH AND DISEASE

Thursday evenings, October 15 - November 19

**GATEWAY TO THE BODY:
THE ORAL CAVITY AND DENTISTRY**



University of California
San Francisco

advancing health worldwide™